



[www.MTFA-Springfield.org](http://www.MTFA-Springfield.org)

[facebook.com/groups/MTFA.Springfield/](https://facebook.com/groups/MTFA.Springfield/)

[MTFA\\_Springfield@yahoo.com](mailto:MTFA_Springfield@yahoo.com)

# MO Fishing

The Newsletter of the Springfield Chapter of the  
Missouri Trout Fishermen's Association

Formed in 1972 to serve all fishermen in the Springfield area

September 2022

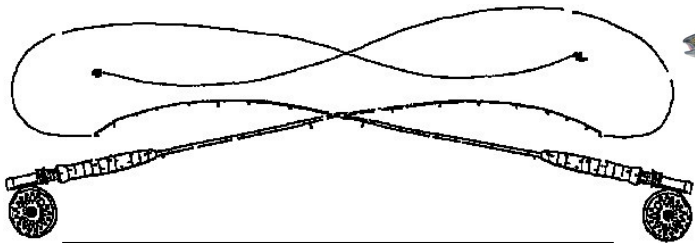
Volume 16 No.09

**The next Get-Together is September 1, from 6pm to dark at the Mountain Spring Trout Park for catch and release fishing and deep fried white bass.**

Kim Schultz will furnish the fish and deep fried squash chips. The chapter will furnish fried potatoes and drinks. You are welcome to bring a desert or side dish. Bring something for a raffle, bring a lawn chair, and bring a long handle net, if you have one.

Single point barbless hooks only for a gentle, in-the-water release.

Mountain Springs Trout Park is at 2549 State Hwy O, Highlandville, MO  
From Nixa at St Hwy 14, go south on Hwy 160 9 miles, turn right on State Hwy O, drive 2 1/2 miles. It will be on the right.



**August Meeting:** This was a fly tying meeting. John Bush and John Dozier demonstrated a fly each that most of you haven't tied before. JB tied a styrofoam-wrapped-in-

pantyhose emerger complete with a shuck at the tail end. This fly floats well and should imitate an emerger at the surface tension trying to emerge from its shuck. What more could a hungry trout ask for. John D tied a tube fly in the

### Springfield Chapter Officers

**President: Bruce Hinkston**

**417 838-0713**

[bruce.hinkston@gmail.com](mailto:bruce.hinkston@gmail.com)

**Vice-President: Kim Schultz**

**417-860-0264**

[kim\\_schultz@sbcglobal.net](mailto:kim_schultz@sbcglobal.net)

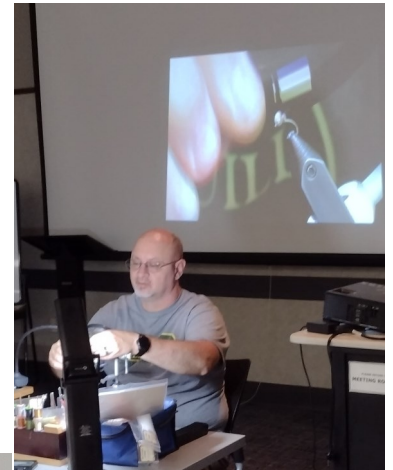
**Secretary: Allen Stanley**

[allenstanley@yahoo.com](mailto:allenstanley@yahoo.com)

**Treasurer: Dennis Stead**

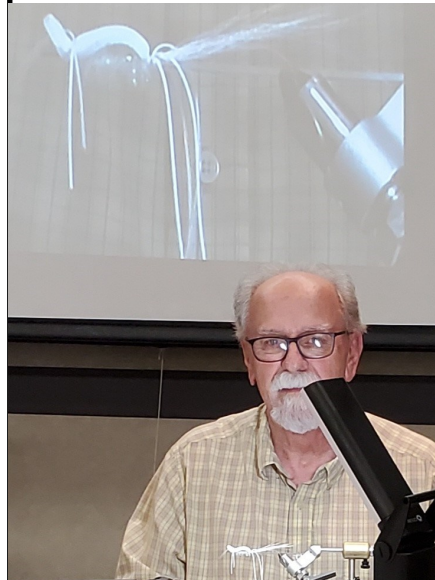
**417-380-3687**

[dmstead@aol.com](mailto:dmstead@aol.com)



Gartside Gurgler style. Tube flies differ from traditional artificial flies as they are tied on small diameter tubes, not hooks. Tube flies were designed to improve hooking success and to prevent damage to the fly. I tied one and look forward to fishing it.

*Bob Randall*



### Chapter News:



**Connie Erickson won the fish carving sculpture. The sculpture was carved by Allen Stanley.**

**Chapter Schedule:** [Events Archive - Missouri Trout Fisherman's Association - Springfield Chapter \(mtfa-springfield.org\)](#)

**2022 is the 50th anniversary of the Springfield Chapter of the Missouri Trout Fishermen's Association**





**From: Schnaath, Hayley <Hayley.Schnaath@dnr.mo.gov>**

**Date: Fri, Aug 26, 2022 at 9:38 AM**

**Subject: Bennett Spring picnic tables**

**To: Bruce Hinkston**

**<bruce.hinkston@gmail.com>, MTFA\_Springfield@yahoo.com <MTFA\_Springfield@yahoo.com>**

**Hello,**

**I wanted to let you know that the back tables (by the grills) were completed at Shelter B at Bennett Spring State Park. These tables were in bad shape and required some cutting and welding on the table legs. Now every table inside the shelter has new boards. They look great. This summer has presented many challenges at the park and it took a while for us to finish this up, so thank you for your patience. Thanks again to the Missouri Trout Fishermen's Association for the kind contribution and the hard work in April! Park visitors have been enjoying all the new tables this summer, and will for years to come.**

**Thank you!**

**Hayley Schnaath  
Park and Historic Site Specialist  
Bennett Spring State Park  
26250 Hwy 64A  
Lebanon, MO 65536  
☎: 417-532-4338  
[www.mostateparks.com](http://www.mostateparks.com)**



**This was made possible by  
donations to the Dick Deerfield  
memorial fund and Dick's family.**



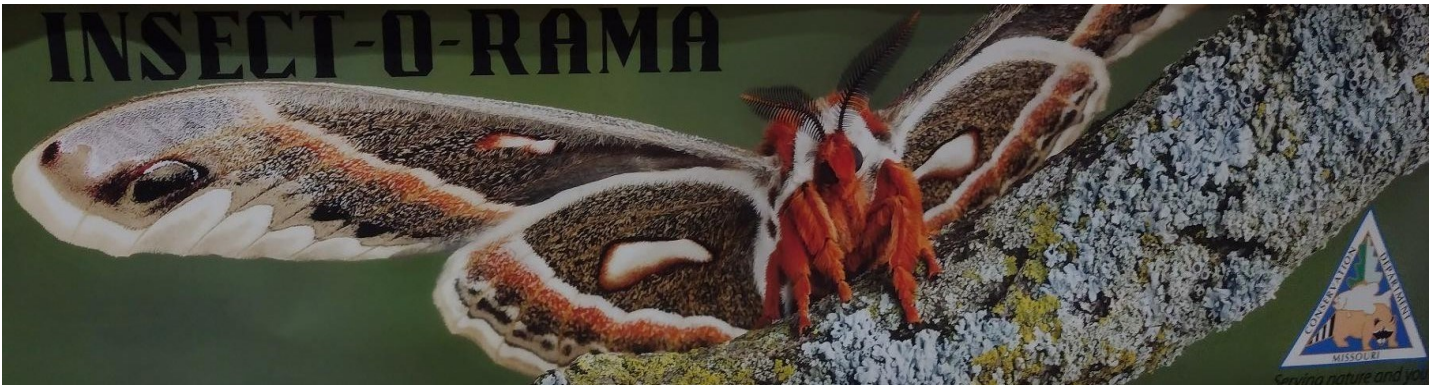
## August 4 Fly Tying Meeting





# Insect-O-Rama, August 12, at the MDC Springfield Nature Center

It was all about kids and insects.



MTFA-Springfield participated in the MDC Springfield Nature Center's Insect-O-Rama.



This is an event where kids learn about insects and their value in the natural



world. Of course, fly fishing anglers take advantage of the fact that trout feed on insects in their various metamorphic stages. We tied flies on safety pins for the kids. Not all of our flies were insect imitations. Some of them were really whimsical. Club members participating were Rod Pennington, Bruce Hinkston, Dennis Stead, Harry Morgan, Kim Schultz, Bill Jackson, and myself, Bob Randall. By the time these

pics were taken, we had tied and given away many pin flies and were beginning to slow down.

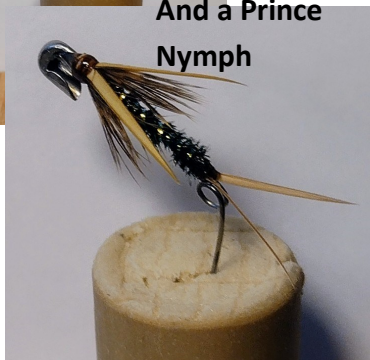


Pheasant tail nymph fly

And a Prince Nymph



This is Harry Morgan doing his impression of the Gonzo fly. They could be twins.



### ***Fishing Reports:***



***John Bush, 8/13/2022:*** I fished Crane Creek today. The temperatures last night were a little cooler, so I was optimistic that Crane would be safe and not stress the fish too much.

I checked the water temperature before I ever made a cast to make sure, and it was reading about 59 degrees.

The water was low and clear due to it being midsummer, so I opted to start with a foam beetle and an unweighted flashback pheasant tail dropper. I was having trouble keeping track of the beetle in the water, so I switched over to a small foam hopper for my top fly shortly after starting.

I had a pretty good day overall, with 15 fish to hand, but nothing big. (2 of them probably set a record for the smallest fish I've caught there). Sizes were from about 2 to 8 inches.

I checked the water temperature 3 different times, and it was right at 60 degrees on every measurement.

Larry Olson and Bob Randall, 8/23/2022, BSSP, Fished above and below the Holland Dam (the old rock dam). Larry caught two below the dam using a sowbug and a tigertail. Then he moved above the dam and found the honey hole, catching 10 to 15 more mostly with a tigertail bugger. Bob fished higher up and watched several other anglers fish that same honey hole (before Larry arrived) and they tore them up. Bob only brought four to hand. One was very short but had a stocky body. It was very odd. The other trout must call him "Stubby". Left about noon.



2022 Silver  
Salmon

***Mike Kidd, Alaska:***





## ***John Bush's Styrofoam and Panty Hose Emerger Fly (from Skip Morris book)***

### ***Recipe:***

**Hook:** Tiemco 2487 size 16-20, could use

**Tiemco 100, light wire is desirable**

**Thread:** Olive, could use any small diameter thread, any appropriate color

**Thorax:**

1) styrofoam ball approx. 1/8" diameter wrapped in

2) panty hose, approx. 1" square

**Abdomen:** thread base

**Shuck:** Sparkle emerger yarn, may have to split strand with bodkin



**Debarb Hook, set in vice.**

**Start thread wrap behind hook eye and wrap shank halfway to across from hook point and back to behind eye.**

**Use bodkin to tease styrofoam ball out of packing material.**

**Place that ball in the middle of a one inch square piece of pantyhose and gather it around the ball.**

**Tie the gathered panty hose material to top of hook securely.**

**Cut off excess of panty hose material.**

**Tie on sparkle emerger yarn to make a trailing shuck.**

**Continue wrapping thread to build a slight taper between panty hose material and hook shank.**

**Cut off any shuck material ahead of tie-in point, leaving trailing shuck.**

**Wrap thread forward to just behind the hook eye and whip finish.**

**Trim trailing shuck material to desired length (approximately the length of the thread abdomen).**

**Fish it to imitate an emerger at the underside of the water surface.**

**This fly recipe is a generic emerger pattern that can be modified to imitate a number of insect variations. The shuck could be sparkle emerger yarn, antron, or any substitute of your choice. John used sparkle emerger yarn for this one to imitate a blue winged olive mayfly. You could use antron in a brown olive color for a PMD imitation.**

## ***John Dozier's Gartside Gurgler Tube Fly***

### ***Recipe:***

***Tube: 1 1/2 " tube***

***Junction tube: 3/32" tubing cut  
1/8" to 1/4" length***

***Thread: white 2/10***

***Tail: White Buck tail, flash: Pearl  
flashabou***

***Legs: white, rubber leg material***

***Body: white cactus chenille***

***Close cell foam, 1/8" thick, white***



***Cut junction Tube to size and place on pin (or use a paperclip instead of the tube pin)***

***Start thread wrap at junction tube connection***

***Tie in buck tail at connection with junction tube***

***Tie in flashabou on each side, leaving a flash tail past the tail***

***Tie in rubber legs at base of tail, measured to end of tail***

***Half hitch***

***Tie in tapered foam layer***

***Tie in and palmer chenille to make body***

***Pull foam forward and tie in at front of body***

***Tie in front rubber legs***

***Half hitch and add glue or head cement***

***Not sure that you understand tube flies? Watch this video: [The Basics of Tube Flies - YouTube](#)***





*John Dozier just below the old rock dam at Bennett Spring (AKA the Holland Dam).*

*If you're familiar with this piece of water, you'd know that the spot where John appears to be fishing would be well over his waist. This is just a little photo magic.*

*In the original photo, he's standing off to the left, completely out of this photo frame.*

### **Water levels:**

Roaring River water level: [National Weather Service Advanced Hydrologic Prediction Service](#)

Taneycomo water level: [National Weather Service Advanced Hydrologic Prediction Service](#)

Bennett Spring water level: [National Weather Service Advanced Hydrologic Prediction Service](#)

Older newsletters through 2007 are archived here: <http://www.mtfa-springfield.org/news-events/newsletter/newsletter-archive/>

If you would like to submit an article for the MTFA newsletter, please put MTFA NL in the email subject line and send to Bob Randall: [bobbyleensandy@gmail.com](mailto:bobbyleensandy@gmail.com)

More about us: MTFA Website [www.MTFA-Springfield.org](http://www.MTFA-Springfield.org)

Facebook [facebook.com/groups/MTFA.Springfield/](https://facebook.com/groups/MTFA.Springfield/)

E-mail [MTFA\\_Springfield@yahoo.com](mailto:MTFA_Springfield@yahoo.com)

[Membership - Missouri Trout Fisherman's Association - Springfield Chapter \(mtfa-springfield.org\)](http://www.mtfa-springfield.org)