

MSU Beginning Fly Fishing KIN 135-315

- **Instructors:**

- **Bob Randall and
Larry Wegmann**

- **Mentors:**

- **Members of the Springfield Chapter of the
Missouri Trout Fishermen's Association**





Missouri Trout Fishermen's Association

Since 1972, Chapters in Springfield, KC, SL, & Branson.

The purpose of the Association is to encourage and promote interest in trout fishing.



Missouri Trout Fishermen's Association

**Monthly meetings at the Springfield Conservation Nature Center,
First Thursday each month.**

**We fish, tie flies, brag a lot, tell wonderful stories
(some of which are true ... maybe).**

We offer you a free 2020 membership for taking this class.



Grading Scale/ Attendance

Attendance and attentive participation at all class meetings and field trip ="A".

Class will begin at 6pm and roll call will be first on the agenda.



For each class period missed = One letter grade deduction.

For missing field trip = Two letter grade deduction.

Due to nature of class there will be no make-up opportunities.

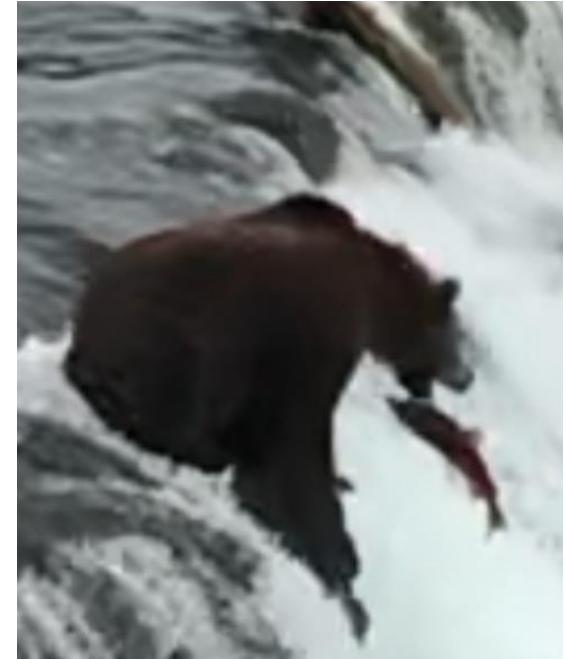
Failure to adequately participate in class



can cause a reduction in one's grade.

Notes: The field trips will occur even in inclement weather unless lightning, flooding or icy roads are imminent. The class coordinator, not the student, will determine this.

It's called fishing. It's not casting, it's not tying flies, it's all of that. Sometimes, it's catching.



He Missed!

Catching is presenting the fly,
catching is setting the hook,
catching is playing the fish properly,
catching is landing the fish.

**Catch and Release is keeping the fish's gills in the wet,
Catch and release is removing the hook quickly and efficiently,
Catch and release is returning a viable, healthy fish into the water.**



HE IS THE ONLY ONE I KNOW WHO
CAN CAST A SIZE SEVEN HAT
WITH A FOUR WEIGHT LINE!



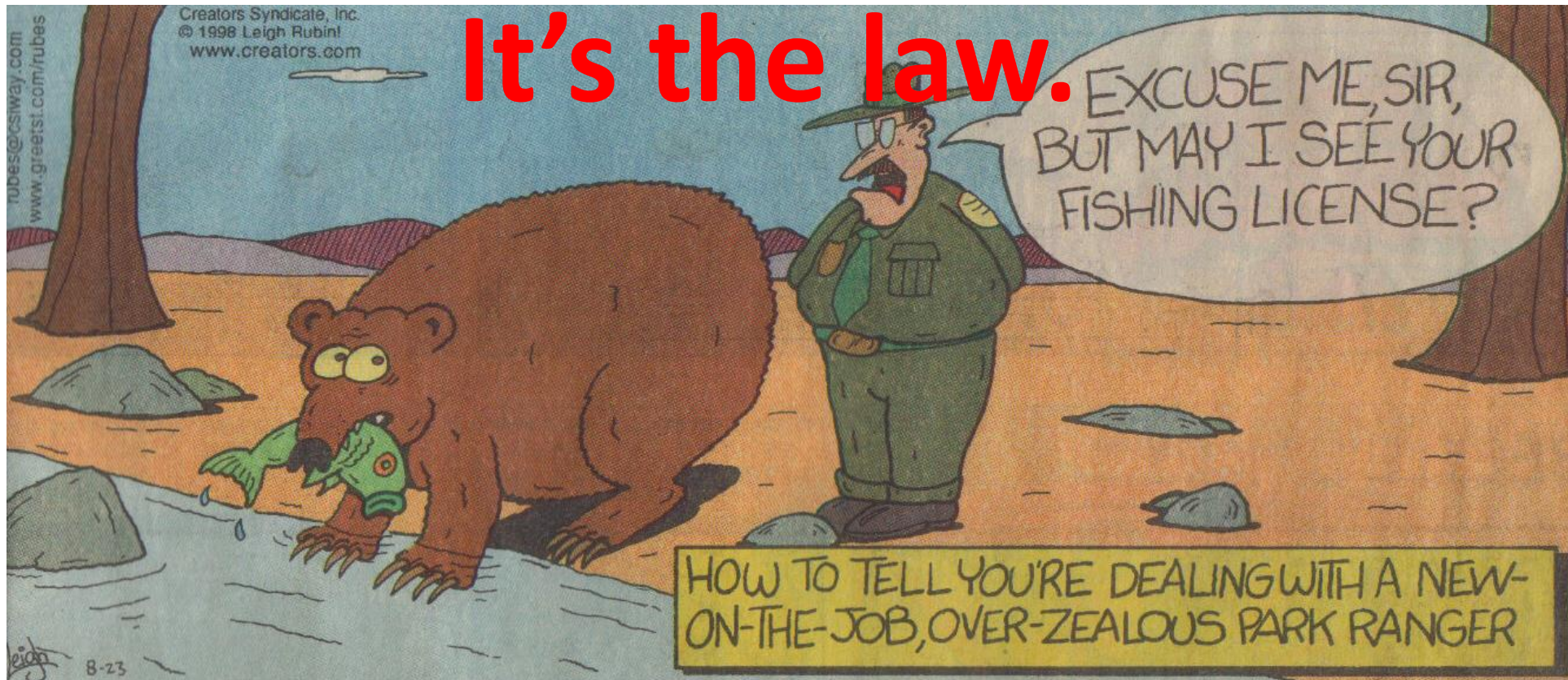
Class fee of \$25.00 is to cover equipment and supplies provided by MTFA. All needed equipment will be furnished EXCEPT sunglasses and caps.

Please don't break our stuff.

If the fly tying kit and equipment are not returned or is broken or in some way unusable, the student will be responsible for paying a fair replacement cost and will have an encumbrance placed on his/her enrollment until the payment is received by MTFA.



The student must have a Missouri Fishing license (\$7 daily or \$12 annual resident) and a “Daily Trout Tag” (\$4) the day of the Roaring River field trip.



Class Objectives:

- 1. Learn the fundamentals skills of fly-casting.**
- 2. Learn to select and care for equipment properly.**
- 3. Learn the proper attitude toward conservation and fly-fishing.**
- 4. Learn safety techniques within the sport of fly-fishing.**
- 5. Learn basic fly-tying skills.**
- 6. Learn about fishing locations in southwest Missouri.**

Ready, Set, Go

Rod set-up and casting.